

COMPACT SYSTEM

The last word in the world of sanitary valves

- Re-engineered valve body
 - Reduced overall dimensions and weight by around 10-15% (depending on diameter) compared to more traditional designs (such as our “K-series”)
- Patented new clamp (**clamshell™**) (see picture on this page)
 - Simplifies process of stripping and re-assembling the valve in place
 - Times of disassembling and reassembling are significantly reduced.

The Compact system features a **mounting collar system** for a sanitary and compact connection to the process equipment. Mounting collars can be provided with mounting pins and slots for bayonet-type connection (most useful for valves over 10” diameter).

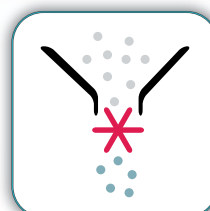
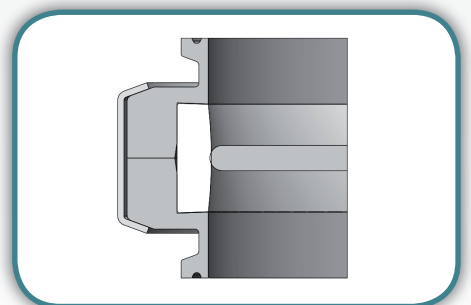
The Compact System offers a full range of solutions for the following categories of valve:

- 1) **Butterfly Valve**
- 2) **Flowmaster Valve**
- 3) **TabMaster Valve**

And is available in the following sizes:
DN100 (4”) – DN150 (6”) – DN200 (8”) – DN250 (10”) – DN300 (12”)



The clean design of the clamshell™ clamp system optimizes user handling



Application: Interception/Flow control

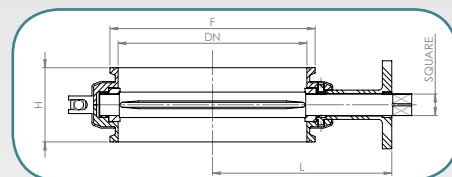
All Oyster™ branded sanitary valves are designed according to cGMP standards. They are also manufactured to exacting tolerances and finished to the highest pharmaceutical standard. All Oyster™ butterfly valves are suitable for handling:

- **Powders**
- **Granules**
- **Liquids**
- **Gels**
- **Tablets**

OYSTER BUTTERFLY VALVE



	100	150	200	250	300
Dimensions (mm)					
DN	100	150	200	250	300
F *	4	6	8	10	12
L	140	165	190	215	240
H	76	76	76	76	76
E (square)	17x17	17x17	17x17	17x17	17x17
Weight					
Kgs	5,20	7,30	9,80	12,50	15,30
Lb	11,46	16,09	21,61	27,56	33,73
Pressure (Barg) **					
up-stream / down-stream	powder tight				
Internal / External	0,5	0,5	0,5	0,5	0,5
Average Torque ***					
Nm	28	42	59	80	109
Lb-ft	40	80	120	200	210
Tolerance	+/- 10%	+/- 10%	+/- 10%	+/- 10%	+/- 10%
Temperature ****	Min.		Max.		
C°	- 30		+ 80		
F°	- 22		+ 176		



* A full range of TC specification can be supplied

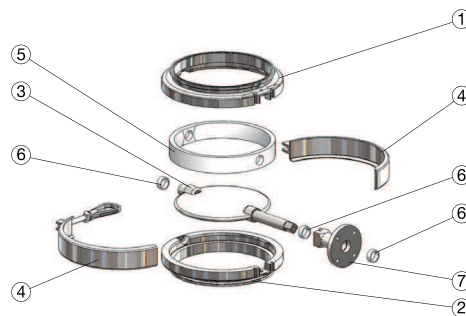
** As standard configuration. Other solution can be customised in order to achieve different targets.

*** Values based on Silicone gasket. They may vary with PTFE, FKM, MFKM, FFKM seal

**** Values based on Silicone gasket They can be more performing with other elastomers

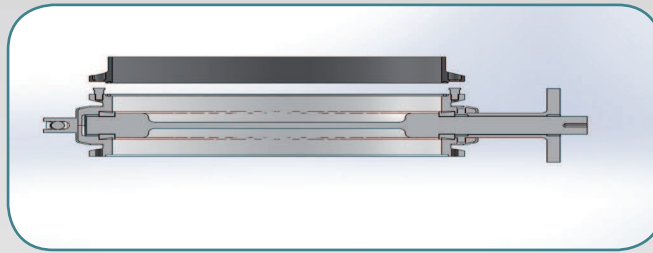
TABLE OF MATERIALS

1	Upper half-body	AISI 316L, C22
2	Lower half-body	AISI 316L, C22
3	Leaf	co-moulded VQM on AISI 316L
4	Clamshell™	AISI 304
5	Gasket (*)	VMQ, EPDM, FKM, FFKM, MFKM, PTFE
6	Bushes (*)	PTFE, ZVE100
7	Lever/actuator Support	AISI 316L , AISI 304
not shown	Handlever	Arm: AISI304, AISI 316L, Pommel: Bakelite
not shown	Screw	AISI 304

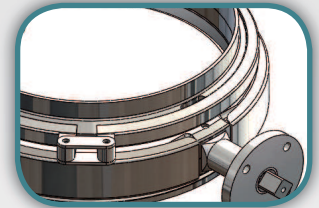
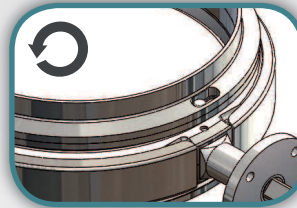
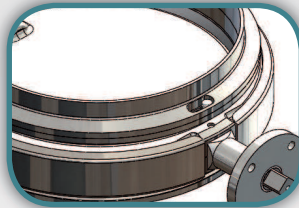
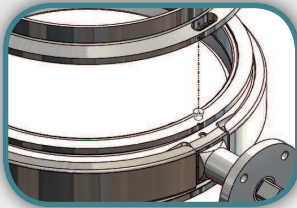


* Material in compliance with FDA 177.2600

MOUNTING COLLAR - COMPACT



The compact mounting collar is an improvement on the standard TC connection



Main features :

- The Compact Mounting Collar one operator can locate and secure the valve in position without assistance, and it is particularly suitable where valves are located in positions that are hard to get at.
- **Male / Female** solution
- Can be supplied with a **o-ring** to ensure tightness
- M.o.c. mounting collar: AISI 316L, C22
- M.o.c. o-ring: VMQ ; PTFE ; FEP O-SIL ; FFKM

Available sizes: DN100-DN150-DN200-DN250-DN300

OPTIONS FOR OPERATION



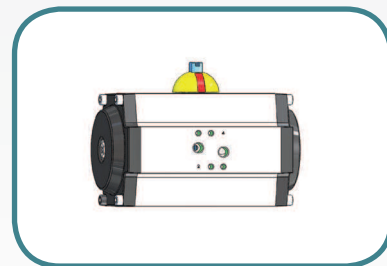
Manual Option:

Standard: Handlever with bakelite pommel

Orientation: 0° / 90°
-45° / +45°

Optional: Full Stainless Steel for easy cleaning.
Different orientation of the lever arm

NOTE: Manual operated valves are NOT included in the scope of ATEX Normative



Automatic option:

SR: Spring return (single action) pneumatic actuator (rack and pinion type)

DA: Air/Air (double action) pneumatic actuator (rack and pinion type)

MOC: Aluminium or Stainless Steel

ATEX: Certified on request

AIR SUPPLY: min. 5 Bar (75 PSI) – max.10 Bar (150 PSI)

ACCESSORIES: NAMUR single or double SOLENOID Valve
LIMIT Switches
PositionSensors 4-20A
Positioneer 3-15PSI

OPENING: Degree of opening and closing is fully adjustable

ValvEngineering Srl

Via di Coselli 23/25 – 55012 Capannori - LUCCA - Italy

• TEL +39 0583 378587 • FAX+39 0583 1553006

• P.IVA IT02090150463

WEB: www.valvengineering.com MAIL: info@valvengineering.com

DISTRIBUTED BY:

