

## OYSTER™ COMPACT VP SERIES



The Oyster Compact VP series valve is a fully sanitary butterfly valve for powders and granules, designed for applications with full vacuum. Unlike other sanitary valves it is fully vacuum compatible in both open or closed position

The valve is manufactured to full pharmaceutical specification. All product contact parts are machined from AISI316L with mirror polish finish.

### KEY FEATURES

Full Vacuum performance

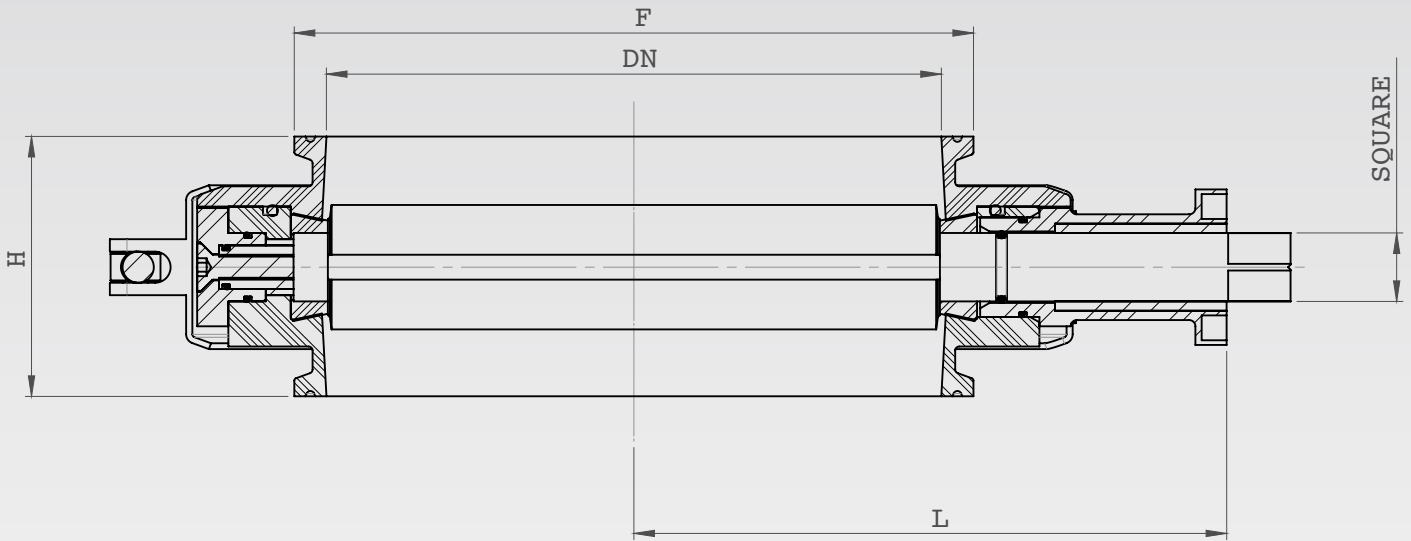
- Resists full vacuum in both closed and open positions
- Excellent price/performance/quality ratio
- Few components, simple and robust design for low maintenance costs and long product lifetime
- Design conforms to cGMP standards
- Particularly suitable for clean room installations



### FIELD OF APPLICATION

Powder shut off - Vacuum

# OYSTER™ COMPACT VP SERIES



## KEY DIMENSIONS:

(Dimensions in mm)

Nominal size DN	150	200	250	300
F*	6"	8"	10"	12"
L	165	190	215	240
H	76	84	84	84
DRIVE SQUARE	17x17	17x17	17x17	17x17
Weight - Kg (Lb)	8.4 (18.5)	17.5 (38.5)	21.5 (47.3)	25.7 (56.6)

\* TC specification is ASME/BPE unless otherwise specified. A full range of tri-clover types can be supplied.

The robust construction of the Compact VP design ensures compatibility with the most demanding vacuum applications. At the same time the ingenious, intrinsically clean design allows easy maintenance and cleaning even wearing gloves.



## INSTALLATION ZONE:

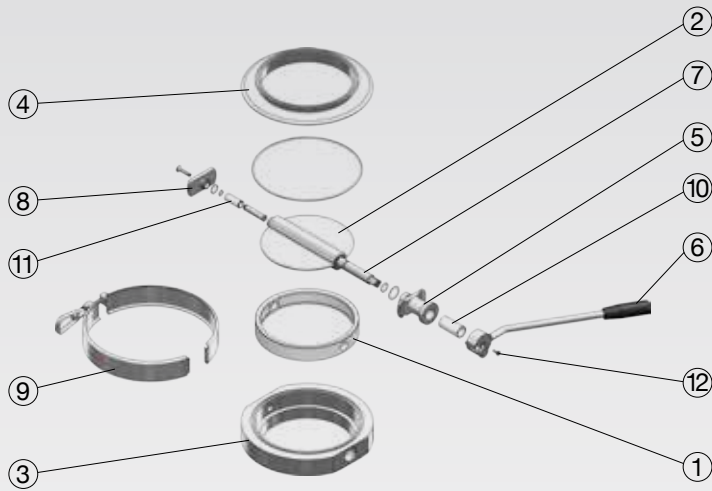
### Working pressure - Barg

Max P In/out Leaf closed	0.5 bar (7.3 psi)
Min P In/out Leaf closed	-1.0 bar
Min P In/out Leaf open	-1.0 bar
Max P upstr./downstr. Leaf closed	0.5 bar (7.3 psi)
Min P upstr./downstr. Leaf closed	-1.0 bar

### Temperature

Manual	-0°/+90°C (32°/194°F)
Actuated	-0°/+80°C (32°/176°F)

# OYSTER™ COMPACT SYSTEM



PARTS LIST AND MATERIALS		
Ref	Part Name	Material options
1	Gasket*	Silicone
2	Leaf	AISI 316L (EN 1.4404), C-22
3	Lower H.body	AISI 316L (EN 1.4404), C-22
4	Upper H.body	AISI 304 (EN 1.4301)
5	Lever/Actuator Support	AISI 304 (EN 1.4301)
6	Handlever	AISI 304 (EN 1.4301)
7	Shaft	AISI 316L (EN 1.4404), C-22
8	Rear cover	AISI 304 (EN 1.4301)
9	Clamshell clamp	AISI 304 (EN 1.4301)
10, 11	Bushings	Peek
12	Bolt	AISI 304 (EN 1.4301)

\* Material in compliance with FDA §177,2600

All Oyster Compact valves are suitable for a full range of methods of operation/automation.

All materials used in the construction of the Oyster Compact series valve are fully compliant with the requirements of the FDA, EN1935/2004 and cGMP. Product contact surfaces are mirror polished to the highest pharmaceutical standards.

**Silicone seals are in addition, USP Class VI certified.**

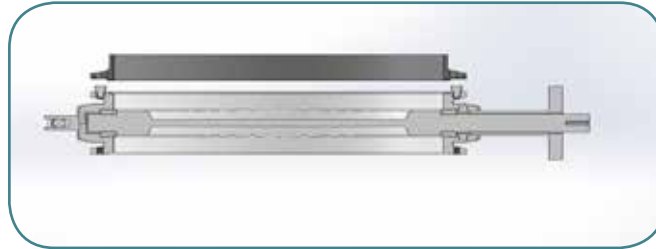
Full documentation is available for every valve, on request.



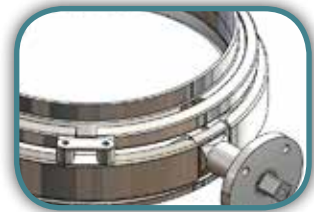
OPTIONS FOR OPERATION:				
Manual operation		Automatic operation		
<b>Standard:</b>	Handlever with locking pin	<b>Actuator types:</b>	Double acting Rack & pinion pneumatic	
<b>Orientation:</b>	0-90°		Spring return Rack & pinion pneumatic	
	45-45°		Electric actuator	
<b>Options:</b>	Full stainless steel lever	<b>Materials:</b>	Anodised aluminium, St/St	
	Customised orientation		<b>Options:</b>	Solenoid valve
	Lockable			Position sensors, limit switches
	Position sensor			4-20 mA positioner for proportional control
	Push & turn lever			Full st/st enclosure
	Multi-position stops			Quick release Actuator support
		<b>ATEX:</b>	Certification: II 2GD cIIB T4/T135°C	
		<b>Air supply:</b>	Min 5bar (75 psi)/max 10bar (150psi)	
			Dry, unlubricated.	

**Above all the valve is designed to be user friendly and easy to maintain, to ensure a long and profitable service lifetime.**

# OYSTER™ COMPACT SYSTEM



OYSTER COMPACT MOUNTING COLLAR



Where it is required to fit a valve underneath a machine or hopper, even with Tri-clamps, this can be a tricky operation requiring more than one person.

For this reason we have perfected the Oyster Mounting Collar bayonet system.

**This is recommended for valves of 10" and over and enables this awkward 2 or 3 person job to be accomplished easily by a single operator.**

The Compact Mounting Collar system consists of a proprietary welding ferrule with machined slots which is welded in place on the outlet. The valve in this case is fitted with locating pins which engage in the slots so that as the valve is turned through a few degrees, the valve is held in position against the ferrule in such a way that the operator's hands are freed to enable him to fit the clamp to secure the valve in position. An O-ring ensures tightness at the join.

**Removing the valve is also easier and above all safer as it is now a two stage process.**

## ValvEngineering Srl

Via di Coselli 23/25 – 55012 Capannori - LUCCA - Italy

• TEL +39 0583 378587 • FAX+39 0583 1553006

• P.IVA IT02090150463

WEB: [www.valvengineering.com](http://www.valvengineering.com) MAIL: [info@valvengineering.com](mailto:info@valvengineering.com)

DISTRIBUTED BY: